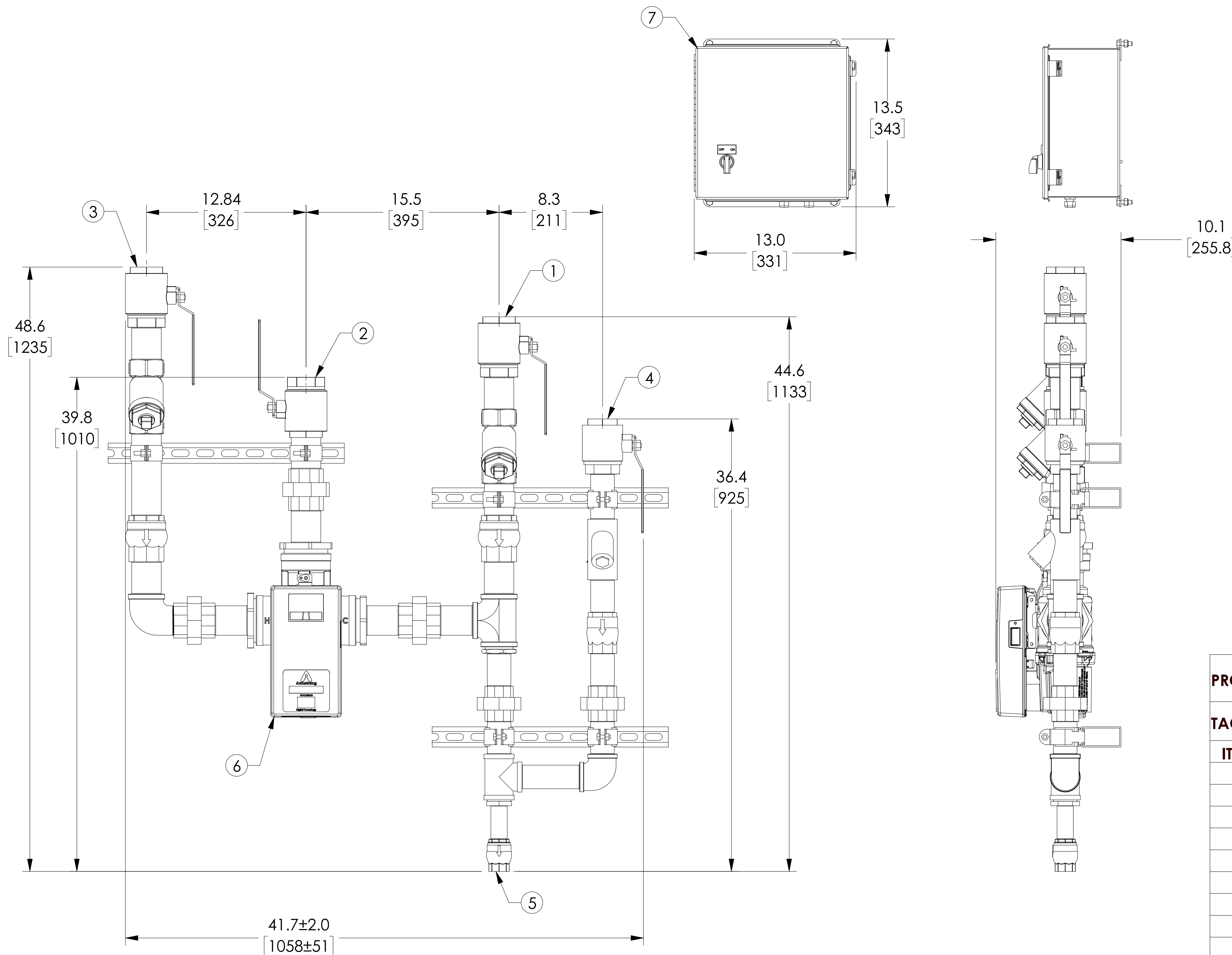


APPROVAL

BY: _____ DATE: _____

- APPROVED, PROCEED WITH FABRICATION
- APPROVED AS NOTED, PROCEED WITH FABRICATION IN ACCORDANCE WITH COMMENTS
- DISAPPROVED, DO NOT FABRICATE



PROJECT DESCRIPTION:

TAG:

ITEM	DESCRIPTION	CONNECTION
1	COLD WATER INLET	2" NPT
2	MIXED WATER OUTLET	2" NPT
3	HOT WATER INLET	2" NPT
4	RECIRC RETURN INLET	1-1/2" NPT
5	RETURN TO HEATER	1" NPT
6	DRV50	2" NPT
7	ELECTRICAL PANEL	110VAC @ 1.2A
	ITEM	
	PIPING	COPPER TYPE "L"

NOTES:

1. ARMSTRONG PART NUMBER: D86394
2. ALL DIMENSIONS +/- [25] UNLESS OTHERWISE SHOWN
3. COPMLETE ASSEMBLY LEAD FREE COMPLIANT - THE WETTED SURFACE OF THIS PRODUCT CONTACTED BY CONSUMABLE WATER CONTAINS LESS THAN ONE QUARTER OF ONE PERCENT (0.25%) OF LEAD BY WEIGHT
4. PACKAGE INCLUDES ALL REQUIRED INLET CHECK VALVES AND STRAINERS ON DOMESTIC SIDE

DO NOT SCALE DRAWING TOLERANCES UNLESS OTHERWISE SPECIFIED	
DIMENSIONING ENGLISH [mm]	
FRACTIONAL ± 1/64	
ANGULAR: ± 2	
DECIMAL	
.XXXX ± .0005	----
.XXX ± .005	.010
.XX ± .015	.10
.X	.3

NAME	DATE
Lucas Wilkins	08/10/2016
DRAWN	
RELEASED	

ARMSTRONG INTERNATIONAL
Copyright © 2010 ARMSTRONG INTERNATIONAL, INC.

DMC50BS FLEX 2 NPT 2 NPT 1-1/2 NPT

MATERIAL	CN52129	REV A	DWG. SALES
----------	---------	-------	------------

SHEET 1 OF 1