

AHWG TSB#5–SAGE™ BS Ethernet Access

Product: SAGE™ BS

Technical Assessment Reference: N/A

Topic/Problem Replacement & Resolution: Accessing SAGE™ BS via the Ethernet

The following will explain the procedure to access the SAGE™ BS board through an Ethernet connection to a Windows 7 PC/Laptop. This is sometimes required in order to change default settings or to access data.

Note: This is assuming that SAGE™ BS IP address has NOT been changed from original factory default settings

Tools Required:

- Ethernet Cable
- Computer with Admin access (Windows 7 Operating System)

Replacement Process/Steps:

1. Ensure not currently connected to internet before starting (local area or wireless)
2. Click Start → Control Panel → Network and Sharing Center

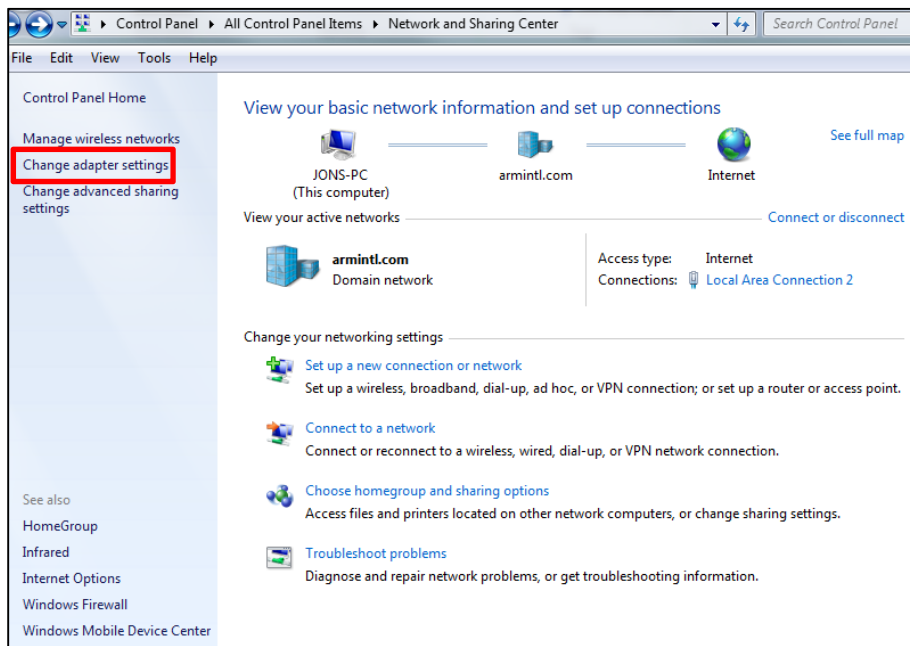


Figure 1: “Change adapter settings’ Window

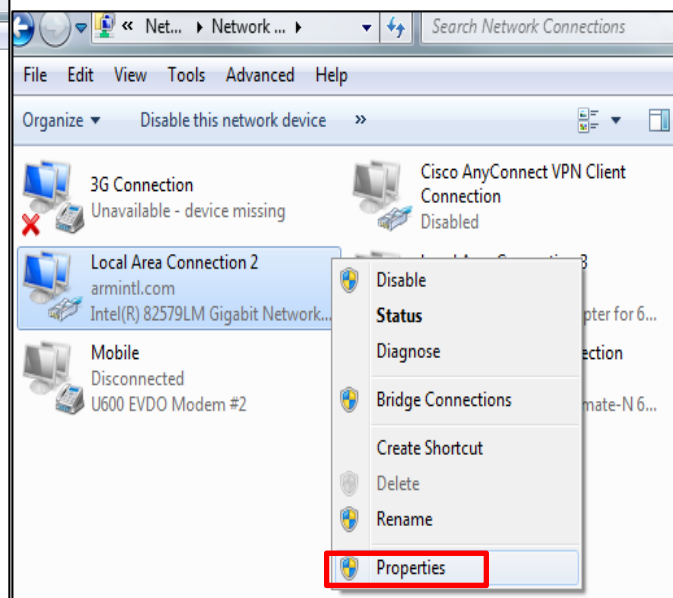


Figure 2: Local Area Connection Window

3. Click “Change adapter settings” on the left side of the window (see Figure 1)
4. Right mouse click your network adapter and then click “Properties” (see Figure 2)

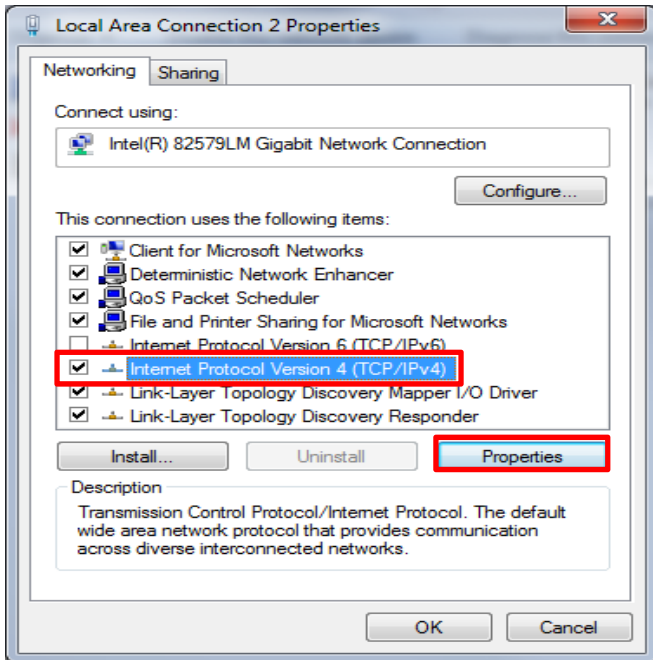


Figure 3: Internet Protocol

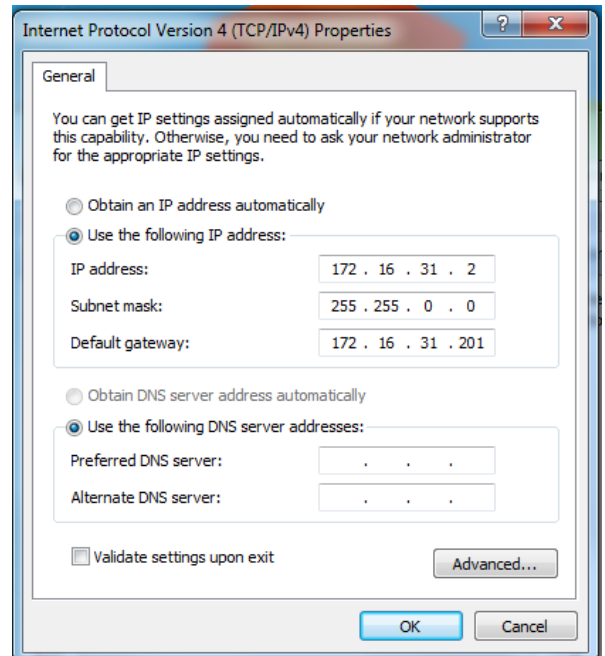
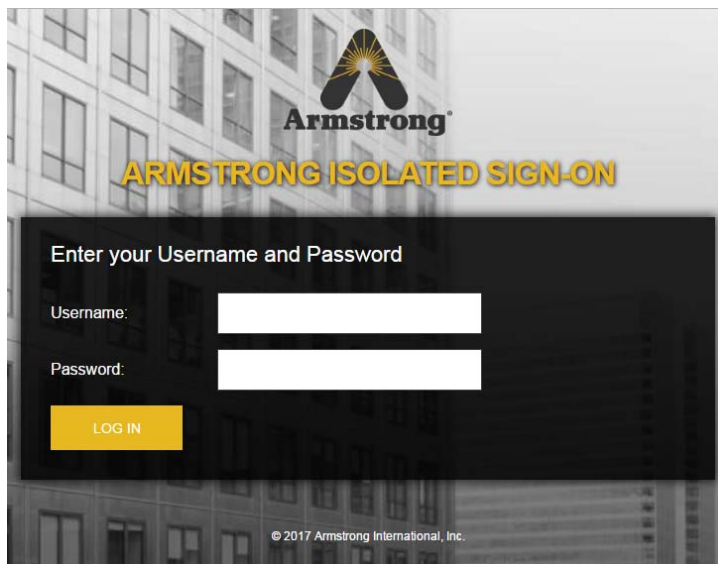
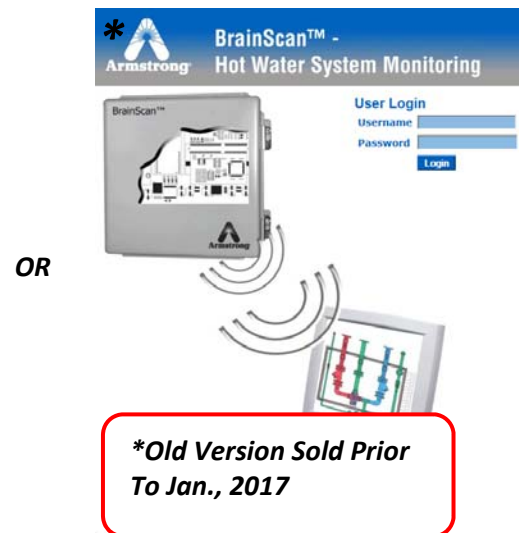


Figure 4: TCP/IPv4 Window

5. Select "Internet Protocol Version 4 (TCP/IPv4)" and then click "Properties" (see Figure 3)
 - a. Note – do NOT uncheck the box, simply click the title
6. Select "Use the following IP address:" and fill out the boxes as shown above (see Figure 4)
7. Click OK and exit both "TCP/IPv4" window as well as "Local Area Connection" window
8. Open web-browser and access the following address – <https://172.16.31.201>



Username: admin
Password: admin



Username: armstrong
Password: brainscan