

DIMENSIONS & DATA CERTIFIED FOR:

Representative:

Order:

Customer:

Order:

Project:

Requirements:

By:

Date:

LIST OF MATERIALS:

NAME OF PART

Body	ASTM A536 DUCTILE IRON
Valve	AISI 440 S. STL. HARDENED
Seat	AISI T304 S. STL.
Bellows	ASTM B103 PHOSPHOR BRONZE

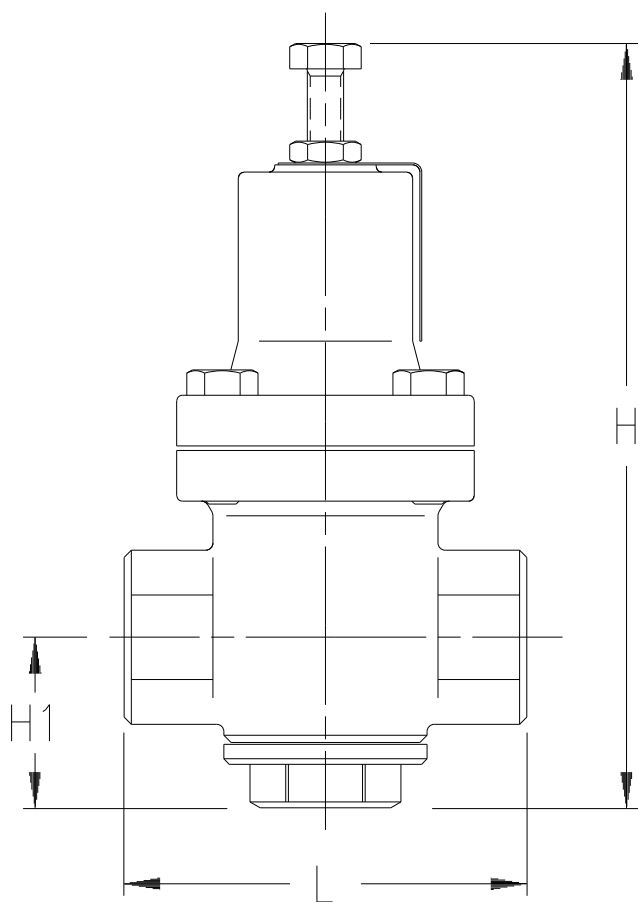
TECHNICAL INFORMATION:

MODEL NO.	INLET psig[bar]	REDUCED psig[bar]	DIFF. MIN.	TEMP. MAX.
GD-45	15-300 [1-20]	3-15 [0.21-1.0]	7 psig [0.5 bar]	450 °F [232 °C]
		7-80 [0.5-5.5]		
		50-140 [3.4-9.6]		

GD-45 IS FOR STEAM, AIR & NON CORROSIVE GAS APPLICATIONS.

DESIGN INFORMATION:

SIZE NPT [DN]	L	H	H1	Cv [Kv]	WEIGHT
1/2 [15]	4-3/8 [111]	8-1/2 [216]	1-7/8 [48]	1.3 [1.1]	7 lbs [3.2 kgs]
3/4 [20]				1.5 [1.3]	
1" [25]				2.5 [2.2]	



Dimensions Are In Inches [mm]



Product

ENGLISH

CDY No.

Date

GD-45

WEB
Y/N
✓

1090

12/1/2011

Rev; C

By; paulg