

DIMENSIONS & DATA CERTIFIED FOR:

Representative:

Order:

Customer:

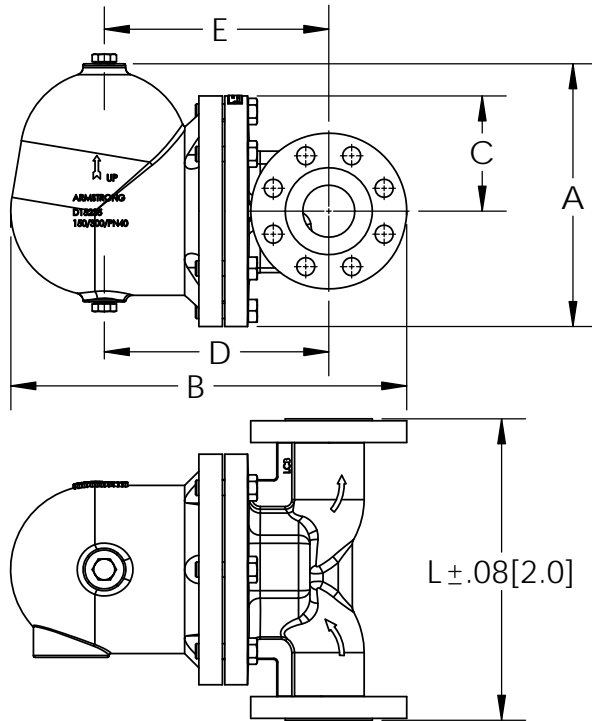
Order:

Project:

Requirements:

By:

Date:



LIST OF MATERIALS

NAME OF PART	MATERIAL
CAP	ASTM A-352 Gr. LCB
BODY	ASTM A-352 Gr. LCB
GASKET	GRAPHITE
MECHANISM	STAINLESS STEEL
FLOAT	STAINLESS STEEL
THERMOSTATIC AIRVENT	STAINLESS STEEL
BOLT	ASTM A193 GR.B7

TECHNICAL INFORMATION

MODEL NO.	ICS F+T
PIPE CONNECTION FLANGED - 150RF / 300RF	1/2 [DN15] - 2 [DN50]
WEIGHT	
PIPE PLUG	

DESIGN INFORMATION

MAX. ALLOWABLE PRESSURE (VESSEL DESIGN) - 150 RF	200 PSI AT 400 °F [14 BAR AT 200 °C]
MAX. ALLOWABLE PRESSURE (VESSEL DESIGN) - 300 RF	535 PSI AT 650 °F [37 BAR AT 343 °C]

OPTIONS

CONDENSATE COLLECTOR (CC)

VACUUM BREAKER (VB)

DESCRIPTION	DIMENSIONS									
	CLASS 150					CLASS 300				
CONNECTION (FLG)	1/2" [DN15]	3/4" [DN20]	1" [25NB]	1-1/2" [DN40]	2" [50NB]	1/2" [DN15]	3/4" [DN20]	1" [25NB]	1-1/2" [DN40]	2" [50NB]
"A" (HEIGHT)	7.4 [188]	7.4 [188]	7.9 [203]	10.9 [278]	10.9 [278]	7.4 [188]	7.4 [188]	7.9 [203]	10.9 [278]	10.9 [278]
"B" (LENGTH)	11.8 [301]	12.1 [3.6]	13.3 [344]	15.7 [399]	16.3 [412]	12 [304]	12.4 [314]	13.6 [346]	16.3 [414]	16.5 [419]
"C" (TOP TO Φ INLET)	2.8 [70]	2.8 [70]	3.2 [80]	4.8 [122]	4.8 [122]	2.8 [70]	2.8 [70]	3.2 [80]	4.8 [122]	4.8 [122]
"D" (BOT TO Φ INLET)	8.4 [213]	8.4 [213]	9.2 [233]	9.4 [238]	9.4 [238]	8.4 [213]	8.4 [213]	9.2 [233]	9.4 [238]	9.4 [238]
"E" (VENT TO Φ INLET)	6.8 [173]	6.8 [173]	7.6 [198]	9.4 [238]	9.4 [238]	6.8 [173]	6.8 [173]	7.6 [198]	9.4 [238]	9.4 [238]
"L" (FACE TO FACE)	8.0 [203]	8.1 [205]	8.2 [208]	12.6 [320]	12.3 [312]	8.2 [209]	8.2 [209]	8.4 [212]	12.9 [327]	12.6 [320]
FLOW	LEFT TO RIGHT	LEFT TO RIGHT	LEFT TO RIGHT	RIGHT TO LEFT	RIGHT TO LEFT	LEFT TO RIGHT	LEFT TO RIGHT	LEFT TO RIGHT	RIGHT TO LEFT	RIGHT TO LEFT
WEIGHT [Kgs]	23[11]	25[11]	33[15]	83[38]	84[38]	24[11]	26[12]	35[16]	88[40]	88[40]
MAXIMUM OPERATING PRESSURE	200 psig [14 barg]					465 psig [32 barg]				

Dimensions Are In Inches [mm]



Product

ICS F+T 1/2 THRU 2 150/300RF

ENGLISH

WEB
Y|N

CD No.

CD2810

Rev;

A

Date

1/30/2014

SHEET 1 OF 1

By: NR