

Solution Source for Steam, Air and Hot Water Systems

Engineering system solutions by providing products, packaged systems, education, analysis and turn-key services.

Armstrong



Armstrong
Intelligent System Solutions™

STEAM • AIR • HOT WATER

FEATURED PRODUCTS

TRAP VALVE STATION

The TVS 4000 Series Stainless Steel Trap Valve Station enhances your capability to check trap operation and offers a built-in method to block and bleed traps. It has two piston-style isolation valves, a test valve and an integral stainless steel strainer with blowdown valve. The TVS 4000 connector accommodates inverted bucket, thermostatic, thermostatic wafer and disc traps. Saves on energy, installation and maintenance. [See page ST-69.](#)

SUPERHEAT STEAM TRAP

SH Series Bimetallic Steam Trap for superheat conditions responds automatically to changing conditions. The SH Series has the ability to handle the large start-up loads associated with superheat applications and operates at pressures to 1,500 psig. Available in carbon or stainless steel. In-line repairable. [See page ST-83.](#)

STEAMEYE® STEAM TRAP MONITORING

SteamEye® keeps an eye on your steam traps 24/7. When this wireless steam trap monitoring system is linked with SteamStar™, Armstrong's Web-based steam trap management software, energy costs are reduced and labor savings are achieved. [See page TM-1.](#)

STEAMSTAR™ WEB-BASED STEAM TRAP MANAGEMENT SOFTWARE

SteamStar™ allows users to track, measure and manage their steam trap population 24/7 via the Internet. SteamStar works by displaying steam trap information on a Web site that collects data from manual steam trap surveys, hand-held diagnostic tools or through steam traps equipped with Armstrong's SteamEye® wireless radio frequency monitoring transmitters. To register for a demonstration of SteamStar, visit www.armstrong-intl.com. [See page TM-1.](#)

ALL-STAINLESS STEEL FLOAT AND THERMOSTATIC STEAM TRAP

The FT-4000 Series F&T Steam Trap can be installed in any piping configuration with little or no re-piping. You get the reliability of the float and thermostatic operating principle, plus the benefits of all-stainless steel construction. Here is a sealed, tamperproof package that is lightweight and has exceptional corrosion resistance. Save on costs for energy, installation and replacement. [See page ST-59.](#)



TVS 4000



SH-Series
Bimetallic Steam Traps



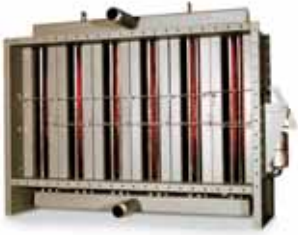
SteamEye®



SteamStar™



Series FT-4000



Duramix™



Condensate
Pump Trap Packages



Hot Water Solutions



Flo-Direct® Direct
Contact Gas-Fired
Water Heater



MegaMix™ Water
Temperature Mixing Unit

FEATURED PRODUCTS

DURAMIX™ FACE AND BY-PASS HEATING COIL

The easy-to-install, easy-to-maintain Duramix™ Heating Coil controls air temperature while operating at full steam pressure. It has the quality, heavy-duty construction inherent in all Armstrong coils.

[See page C-50.](#)

CONDENSATE PUMP TRAP PACKAGES

From institutional low pressure steam heating to industrial process critical heat transfer, Armstrong's engineered condensate pump trap packages provide the most efficient and cost-effective solution to your condensate recovery requirements. [See page CRE-21.](#)

HOT WATER SOLUTIONS

Flo-Rite-Temp™ Instantaneous Water Heater with The Brain™ Electronic Water Temperature Controls and complete Building Automation System Interface Solution (BASIS) is the complete water heating and mixed water temperature control solution. Flo-Rite-Temp water heaters with The Brain deliver an unparalleled level of hot water generation and system temperature control.

Multiple-temperature capability, Legionella control, building automation system (BAS) interface, remote set-point adjustment, out-of-temperature-range advisory and much more are delivered in a single sourced, fully supported, performance-guaranteed solution.

[See page HWS-19.](#)

FLO-DIRECT® DIRECT CONTACT GAS-FIRED WATER HEATER

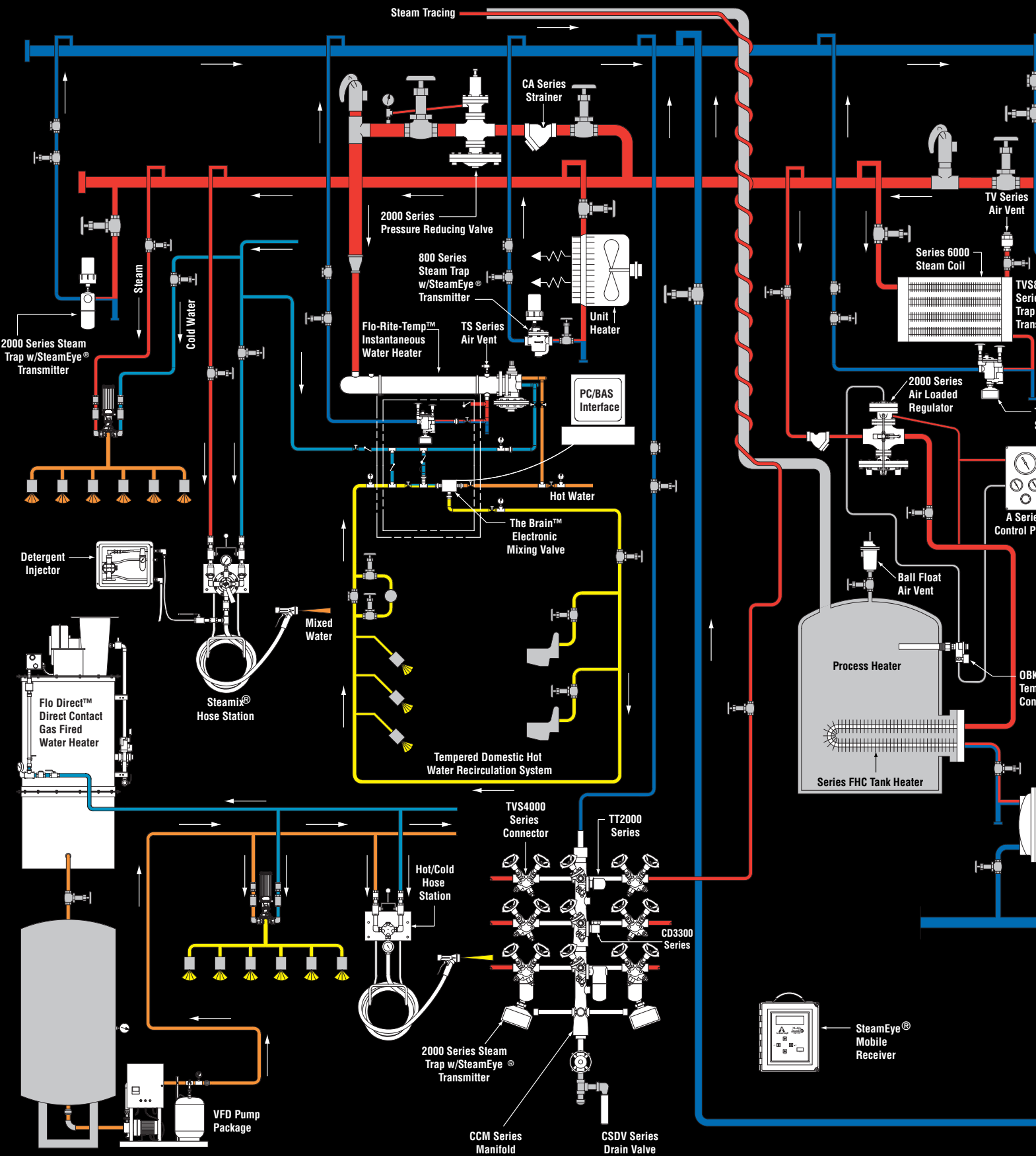
The most advanced unit on the market today, the Flo-Direct® Series Gas Water Heater operates at very low pressure and is suitable for a wide variety of hot water applications. Expect lower fuel costs.

[See page HWS-33.](#)

MEGAMIX™ WATER TEMPERATURE MIXING UNIT

For industrial and process applications, the MegaMix™ unit provides locally or remotely set water temperature control with uncompromising performance. The combination of the valve's efficient mixing chamber, electronic actuator with programming keypad and integrated temperature sensor creates an out-of-the-box temperature control solution that aggressively reacts to incoming pressure and temperature changes, holding output temperatures to within 1°F.

[See page HWS-59.](#)



Armstrong International, Inc.

816 Maple Street, Three Rivers, Michigan 49093 – USA Phone: (269) 273-1415 Fax: (269) 278-6555