

Intelligent Positioner SRD991



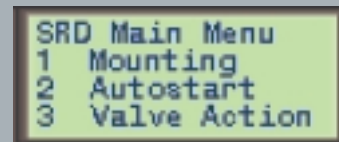
SRD991 — Intelligent Control and User-Friendly

- Intelligent microprocessor-based valve control
- Easy-to-operate, menu-driven graphical LCD
- Multilingual full-text display
- All parameters can be configured locally by push buttons
- Time-saving automatic startup
- Ready for operation with only two steps
- Status and diagnostic messages displayed in LCD
- HART protocol with only 420 Ω load
- PROFIBUS-PA according to IEC 1158-2 based on FISCO
- FOUNDATION Fieldbus H1 according to IEC 1158-2 based on FISCO with PID function block and LAS functionality
- Infrared interface for non-contact communication
- Easy mounting to all linear and rotary actuators
- Options:
 - Limit switches and position transmitter
 - Gauge manifolds and volume boosters

Operation



Configuration

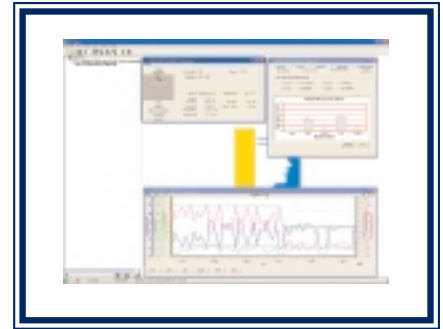
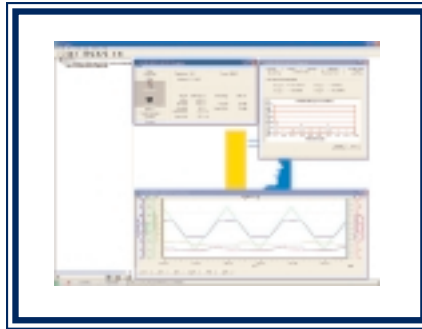


Diagnosis report



Example for mounting on rotary actuators





PC-based operation, configuration and valve diagnostics with PC50 (FDT software)

The SRD991 offers the most advanced technology available on the market today. This includes an infrared interface for non-contact operation and configuration, plus a multilingual full-text graphic LCD. The SRD991 is available with the choice of any process automation communication protocol.

Technical Data

Intelligent		Autostart with self-calibration Self-diagnostics Status and diagnostic messages Configuration of characteristic curves Travel-stop and cutoff functions
	Without communication	Setpoint 4 to 20 mA Load 300 Ω
	With communication	HART Setpoint 4 to 20 mA Load 420 Ω
		PROFIBUS-PA and FOUNDATION Fieldbus H1 Fieldbus protocol acc. to IEC 1158-2 (FISCO) Base current 10.5 mA ± 0.5 mA FDE (fault disconnection electronics)
		FoxCom Digital and analog
Display		Multilingual graphical LCD with full-text display: Display of % valve position, actuator position in mm or in, setpoint or loop current, travel sum and cycle counter, etc.
		LEDs
		Mechanical indicator (standard)
Air supply		1.4 to 6 bar (20 to 90 psig), or 1.4 to 7 bar (20 to 105 psig) with "spool valve"
Stroke range		8 to 260 mm (0.3 to 10.2 in)
Angle of rotation		Up to 95 degree angle
Protection class		IP 65 or NEMA 4X
Electrical classification	ATEX FM/CSA	Intrinsic safety, II 2 G EEx ia IIC T4/T6 Intrinsic safety, Class I, Div. 1, Groups A, B, C, D
Electrical connection		M20 x 1.5 or 1/2-14 NPT (others with Adapter AD-A6)
Pneumatic connection		G1/4 or 1/4-18 NPT
Ambient temperature		-40° to +80° C (-40° to +176° F)
Weight		Single acting: 1.7 kg (3.7 lb) Double acting: 2 kg (4.4 lb)
Optional features		Inductive limit switches (2- or 3-wire) Mechanical switches (microswitches) Position transmitter (4 to 20 mA) Binary inputs or binary outputs Input for external potentiometer Gauge manifold, volume boosters
Attachment to:	Linear actuators	According to IEC 534 Part 6 (NAMUR) and VDI/VDE 3847
	Rotary actuators	According to VDI/VDE 3845 and VDI/VDE 3847
	Any other linear or rotary actuator by means of extensive attachment kit offering	

Reference Documents:

PSS EVE0105 A (en)
MI EVE0105 A (en)



Foxboro
Foxboro, MA 02035-2099
+1-508-549-2424
1-888-FOXBORO
Fax: 1-508-549-4999
www.foxboro.com/instrumentation

Invensys, Foxboro and Foxcom are trademarks of Invensys plc or its subsidiaries and affiliated companies. All other brands and product names may be trademarks of their respective owners.

© 2004 Invensys Systems, Inc. All rights reserved.
Printed in U.S.A.
Bulletin E48-5 0409078 12/04