



Armstrong SteamEye® Gateway

Figure 1
Armstrong SteamEye Gateway



Product Overview

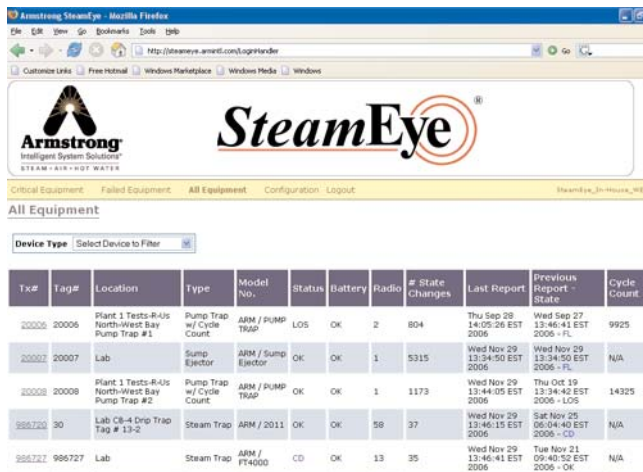
The Armstrong SteamEye Gateway is designed for deployments that require a robust, easily managed steam equipment monitoring solution. The SteamEye Gateway is quickly deployed and accessible by authorized users via a web browser within a local area network (LAN).

Powered by an embedded Java runtime engine, the SteamEye Gateway includes an integrated radio frequency (RF) receiver for steam equipment monitoring. The device is accessed using a standard web browser, eliminating the need for special software.

The SteamEye Gateway can be integrated with Armstrong's SteamStar™, a web based steam trap measurement platform, as part of a comprehensive Best Practices Steam Trap Management Solution.

As a self-contained, solid-state solution, the SteamEye Gateway contains no moving parts, and is designed for use in industrial environments unsuitable for most PC-based equipment.

Figure 2
Armstrong SteamEye Gateway Browser Interface



Key Features & Benefits

Ease of Deployment

Deploying the SteamEye Gateway requires only network and power connections. The device has a high tolerance of temperature and humidity. An existing wiring closet or terminal hub is an ideal location for the device; wall mounting brackets are included.

Flexibility

With its integrated web server, the SteamEye Gateway can be accessed from any network-connected web browser. For added convenience, the device can be configured to send e-mail/pager/text message alerts.

Integration, Management, and Security

Configuration of the SteamEye Gateway is completed at Armstrong International. Connections to the device require user authentication with username and password protection.

To insure seamless integration and simple start-up, the Device Configuration Worksheet must be completed when the order is placed.

Allowing Armstrong remote access to the Gateway is recommended but not mandatory. Remote access is used for administration purposes only and Armstrong is willing to sign a confidentiality agreement when necessary. If remote access is allowed, an internet accessible TCP/IP address or a VPN assigned to the SteamEye device is required.

Product Specifications

Model	Armstrong SteamEye WER
Operating System	Embedded Java-based OS
Ethernet Interface	1 X 10/100Mbps
Network Protocols Supported	IPv4, IPv6, SMTP, FTP, Telnet, HTTP
Inbound TCP/IP ports: Embedded web server Remote configuration Remote software upgrades	80 standard (configurable) 23 (Telnet) 21 (FTP)
Outbound TCP/IP ports: For e-mail/pager/text message notification For SteamStar updates	25 (send mail to SMTP server) 80 (HTTP)
Console interface	1 X RS-232C
RF Receiver	1 X Internal RF Receiver 1 X RS-232C External Receiver Port
Dimensions (H x W x D)	2.75" x 6.53" x 4.45" (70 mm x 166 mm x 114mm)
Weight	1.75 lb (0.8 kg)
Operating Temperature Range	32°-158°F (0°-70°C)

All dimensions and weights are approximate. Use certified print for exact dimensions. Design and materials are subject to change without notice.