

Water Temperature Control - Single Point of Use



Digital

Sense™ Model DMV1

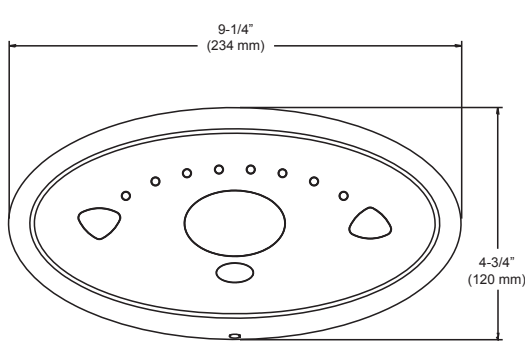
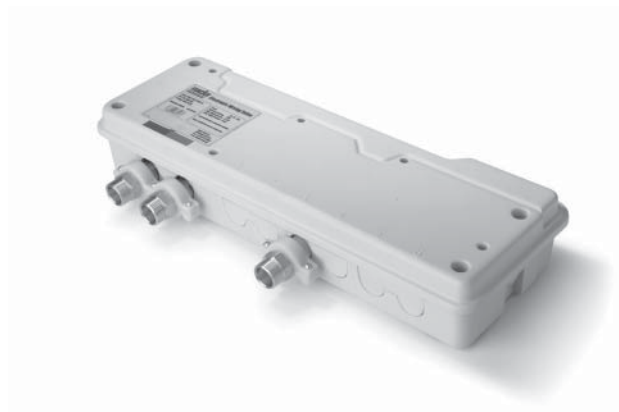
Concealed digital mixing valve with surface mount control panel for lavatory flow and +/-2°F (+/-1°C) temperature control.

Operational Specifications

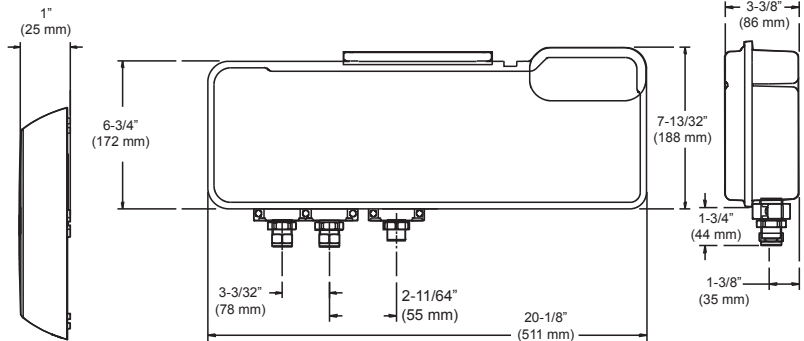
- Programmable timed flow
- No touch on/off flow control
- No touch temperature adjustment
- Programmable minimum/maximum temperature access limits
- Programmable service flush
- Programmable thermal disinfection mode
- Data logging capabilities



For a submittal drawing, refer to CDLW #1147.



Control Panel



Mixing Valve

Sense™ Digital Mixing Valves												
Model	Pressure Drop (psi)										Min. Flow	C _v
	5	10	15	20	25	30	35	40	45	50		
DMV1	3	4	5	6	6	7	7	8	9	9	1	1.2
DMV2												
DMV3	6	8	10	11	12	14	15	16	17	18	1.6	2.5
DMV23												

All dimensions and weights are approximate. Use certified print for exact dimensions. Design and materials are subject to change without notice.



Water Temperature Control - Single Point of Use

Digital

Sense™ Model DMV1-Lavatory Technical Specifications

Connections

- Inlet and outlet connections: 1/2" NPT

Materials

- Control panel cover: Chrome ABS I
- Mixing unit enclosure: PC/ABS
- Integral components: DZR brass stainless steel and engineering plastic

Temperatures

- Factory pre-set:
Min 86°F (30°C), Max 106°F (41°C)
Default 100°F (38°C)
- Programmable range:
Min 86°F - 117°F (30°C - 47°C),
Max 91°F - 122°F (33°C - 50°C),
Default 86°F - 122°F (30°C - 50°C)
Full cold can also be selected
- Minimum blend temperature differential from hot supply:
5°F (2°C)
- Optimum thermostatic control range:
86°F - 122°F (30°C - 50°C)
- Inlet Cold water range (recommended):
34°F - 68°F (1°C - 20°C)
- Inlet Hot water range (recommended):
122°F - 149°F (50°C - 65°C)
185°F (85°C) during disinfection

Performance

- Thermal shutdown upon inlet supply failure
- +/- 2°F (+/- 1°C) delivery temperature stability
- Minimum flow rate at recommended supply conditions:
1 GPM (4 LPM) at <72 psi maintained pressure
1.6 GPM (6 LPM) at >72 psi maintained pressure.

Thermal Disinfection

- Factory Settings
Min. Temperature: 140°F (60°C)
Min. Time: 5 minutes
- Programmable Range
Min. Temperature: 140 - 185°F (60 - 85°C)
Min. Time: 0 - 50 minutes

Reduced water flow during disinfection can be selected.

Environment

- Ambient temperature: 34°F - 104°F (1°C - 40°C)
- Maximum relative humidity: 95% non-condensing

Pressures

- Maximum static pressure: 145 psi (10 bar)
- Maximum inlet supply pressure differential: 3:1 (equal inlet pressures recommended)

IP Rating

- Control panel: IP45
- Overall valve enclosure: IP24
- Electronics compartment: IP45
- PSU: IP45

Electrical

- Supply Voltage: 120V 50-60Hz
- Maximum load: 20W at 12V DC
- Control panel cable length: 10 ft. (3m) supplied
- Maximum distance 20 ft. (6m)

Times - Factory settings

- Flow time: 15 seconds
- Service flush cycle: 2 minutes
- Service flush waiting period: 12 hours

Programmable range

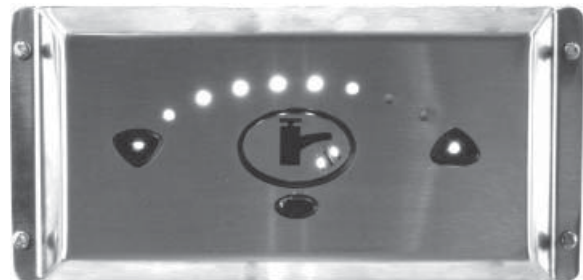
- Flow time: 5 seconds - 60 minutes
- Service flush cycle: 1 minute - 59 minutes
- Service flush waiting period: 1 hour - 983 hours

Operation

- Temperature selector: Full no-touch temperature control
- Flow control: No-touch on/off - timed flow

Approvals

- ASSE 1016, CSA, UL



Optional Stainless Steel Control Panel Cover

All dimensions and weights are approximate. Use certified print for exact dimensions. Design and materials are subject to change without notice.