



Water Temperature Control - Recirculation Systems

Thermostatic

Rada 50R-50R-50R

Thermostatic Central Recirculation System Controller is designed specifically to be installed as the primary control assembly within a pumped recirculating hot water system. Capable of maintaining safe, accurate water temperatures during both peak and zero-demand "idling" periods, the Rada 50R-50R-50R features three Rada 50R thermostatic mixing valves piped in parallel. By combining the high flow capacity of three valves, Rada 50R-50R-50R has a flow capacity of 288 gpm (1,090 lpm) at a 20 psi (1.4 bar) pressure drop.

Rada 50R-50R-50R features three unique integral thermostatic return limiters that monitor recirculation return water temperatures to prevent "temperature creep" within the circuit. Thermostatic return limiters eliminate the requirement for a fitted aquastat and reduce cycling wear and tear on the circulating pump.

Rada 50R-50R-50R features two specially designed surplus valves that effectively "stage out" the second and third Rada 50R during periods when system demand can be managed by a single valve. With a Rada 50R-50R-50R installed as the primary temperature controller within a pumped recirculation system, there will be a zero minimum blended water flow rate/draw-off requirement.

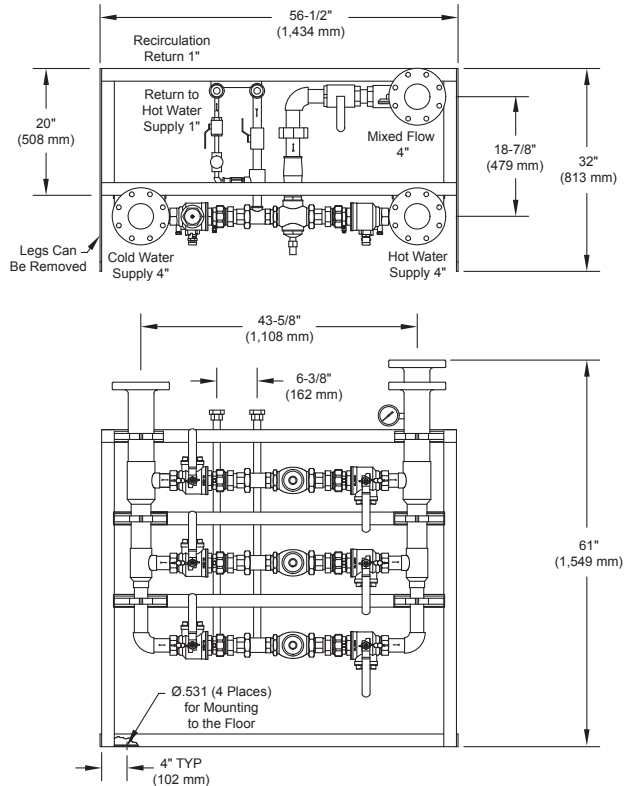
Operational Specifications

- Dual thermostatic elements provide redundancy in the event of individual thermostat failure (50R)
- Typical system temperature control +/-5°F
- Adjustable single temperature lockout (50R removable key)

Technical Specifications

- 4" (100 mm) inlets/outlet
- Pre-piped, pressure-tested, frame-mounted assembly
- Operating pressures
 - Maximum: 150 psi (10 bar)
 - Minimum: 10 psi (.7 bar)
- Maximum pressure drop 20 psi (1.4 bar)
- Maximum flow rate 288 gpm (1,090 lpm)
- Integral check valves and strainers
- Integral thermometer
- ASSE 1017 and CSA B125 certified (Rada 50R)
- Shipping weight 550 lbs (249 kg)

For a submittal drawing, refer to CDLW #1051.



Rada Thermostatic Mixing Valves (gpm)							
Model	Pressure Drop (psi)				Min. System Draw-off	Maximum Flow @7.5ft/sec. (2.3 m/s)	C _v
	5	10	15	20			
50R-50R	97	137	168	193	0	165	42.4
50R-50R-50R	144	204	250	288	0	288	63.6

NOTE: Maximum flow rates determined at 7.5 ft/sec pipeline velocity.

All dimensions and weights are approximate. Use certified print for exact dimensions. Design and materials are subject to change without notice.