

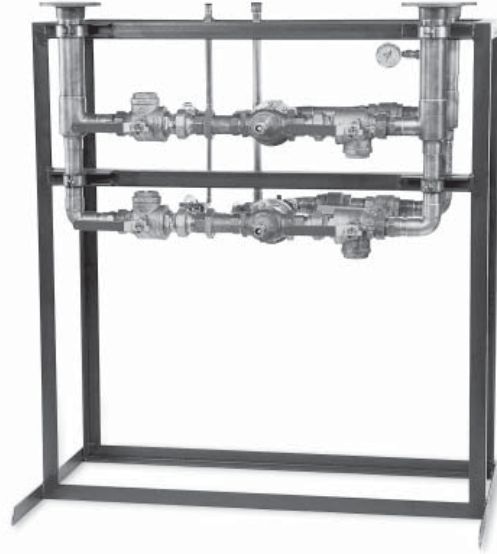
## Thermostatic

### Rada 50R-50R

Thermostatic Central Recirculation System Controller is designed specifically to be installed as the primary control assembly within a pumped recirculating hot water system. Capable of maintaining safe, accurate water temperatures during both peak and zero-demand “idling” periods, the Rada 50R-50R features two Rada 50R thermostatic mixing valves piped in parallel. By combining the high flow capacity of two valves, Rada 50R-50R has a flow capacity of 193 gpm (731 lpm) at a 20 psi (1.4 bar) pressure drop.

Rada 50R-50R features two unique integral thermostatic return limiters that monitor recirculation return water temperatures to prevent “temperature creep” within the circuit. Thermostatic return limiters eliminate the requirement for a fitted aquastat and reduce cycling wear and tear on the circulating pump.

Rada 50R-50R features a specially designed surplus valve that effectively “stages out” one Rada 50R during periods when the system demand can be managed by a single valve. With a Rada 50R-50R installed as the primary temperature controller within a pumped recirculation system, there will be a zero minimum blended water flow rate/draw-off requirement.



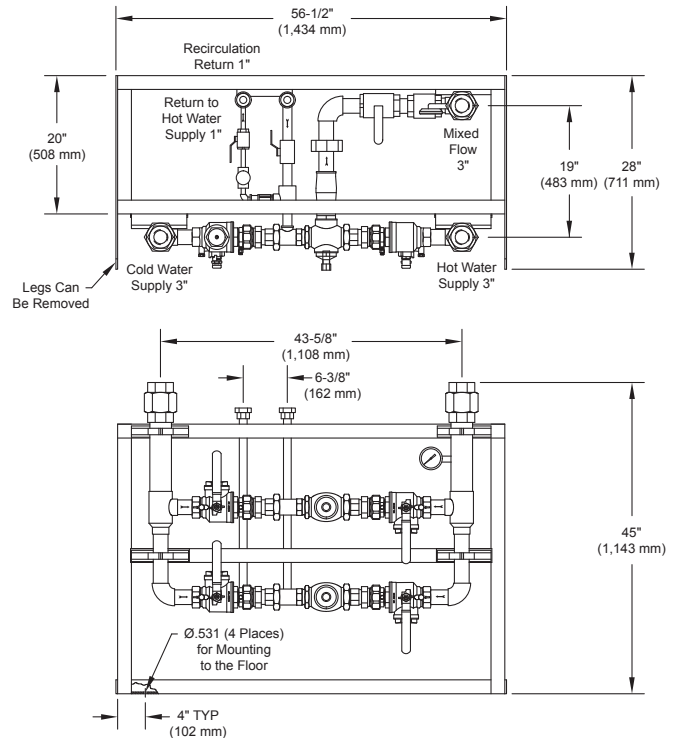
### Operational Specifications

- Dual thermostatic elements provide redundancy in the event of individual thermostat failure (50R)
- Typical system temperature control +/-5°F
- Adjustable single temperature lockout (50R removable key)

### Technical Specifications

- 3" (80 mm) inlets/outlet
- Pre-piped, pressure-tested, frame-mounted assembly
- Operating pressures
  - Maximum: 150 psi (10 bar)
  - Minimum: 10 psi (.7 bar)
- Maximum pressure drop 20 psi (1.4 bar)
- Maximum flow rate @ 7.5 ft/sec (2.3 m/sec): 165 gpm (625 lpm)
- Integral check valves and strainers
- Integral thermometer
- ASSE 1017 and CSA B125 certified (Rada 50R)
- Shipping weight 477 lbs (216 kg)

For a submittal drawing, refer to CDLW #1049.



Rada Thermostatic Mixing Valves (gpm)							
Model	Pressure Drop (psi)				Min. System Draw-off	Maximum Flow @7.5ft/sec. (2.3 m/s)	C <sub>v</sub>
	5	10	15	20			
50R-50R	97	137	168	193	0	165	42.4
50R-50R-50R	144	204	250	288	0	288	63.6

All dimensions and weights are approximate. Use certified print for exact dimensions. Design and materials are subject to change without notice.