



Water Temperature Control - Groups of Fixtures

Thermostatic

Rada 425

Rada 425 Thermostatic Mixing Valve for institutional group fixture water temperature control. Compact design with top and/or bottom blended water outlet makes Rada 425 ideal for recessed enclosure, plumbing chase and utility/mechanical room installation.

Powerful internal mechanism and stainless steel operating mechanism resist mineral deposition.

Capable of close temperature control at diverse flow rates between 2 gpm (7.5 lpm) and 49 gpm (185 lpm). Able to blend to within 5°F (2°C) of either inlet supply due to "low seepage" across internal proportioning mechanism.

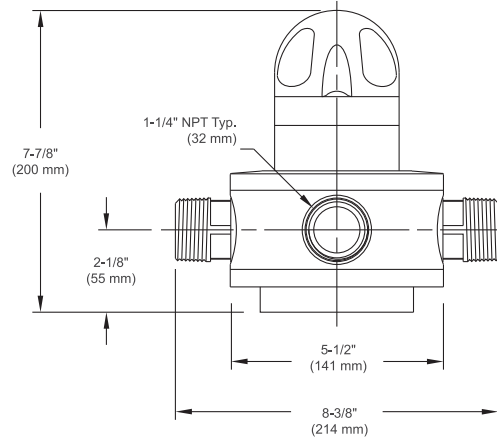
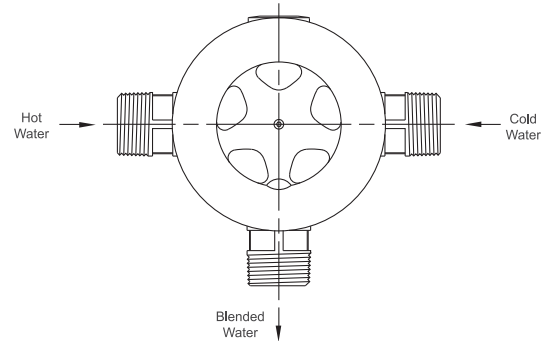
Operational Specifications

- Dual thermostatic elements provide redundancy in the event of individual thermostat failure.
- Typical outlet temperature control +/-2°F
- Adjustable maximum temperature limit stop
- Adjustable single temperature lockout
- Thermal shutdown mode upon inlet supply failure

Technical Specifications

- 1-1/4" NPT inlets and 1-1/4" outlet
- Chrome plated DZR brass/stainless steel
- Operating pressures
 - Maximum: 150 psi (10 bar)
 - Minimum: 10 psi (.7 bar)
- Integral inlet check valves and strainers
- ASSE 1017 and CSA B125 certified
- Shipping weight 18 lbs (8.1 kg)

For a submittal drawing, refer to CDLW #1065.



Rada Thermostatic Mixing Valves (gpm)												
Model	Pressure Drop (psi)										Min. Flow	C _v
	5	10	15	20	25	30	35	40	45	50		
320	8	11	13	15	17	19	20	22	23	24	1	3.4
425	15	22	27	31	35	38	41	44	46	49	2	6.9
40	36	51	62	72	-	-	-	-	-	-	2	16.0
50	49	70	85	98	-	-	-	-	-	-	2	22.0

All dimensions and weights are approximate. Use certified print for exact dimensions. Design and materials are subject to change without notice.



Water Temperature Control - Groups of Fixtures

Thermostatic

Rada 425D

A derivative of the standard Rada 425 Thermostatic Mixing Valve for institutional group fixture control. Compact design with top and/or bottom blended water outlet makes Rada 425 ideal for recessed enclosure, plumbing chase and utility/mechanical room installation.

Powerful internal mechanism and stainless steel operating mechanism resist mineral deposition.

Capable of close temperature control at diverse flow rates between 2 gpm (7.5 lpm) and 49 gpm (185 lpm). Able to blend to within 5°F (2°C) of either inlet supply due to "low seepage" across internal proportioning mechanism.

Operational Specifications

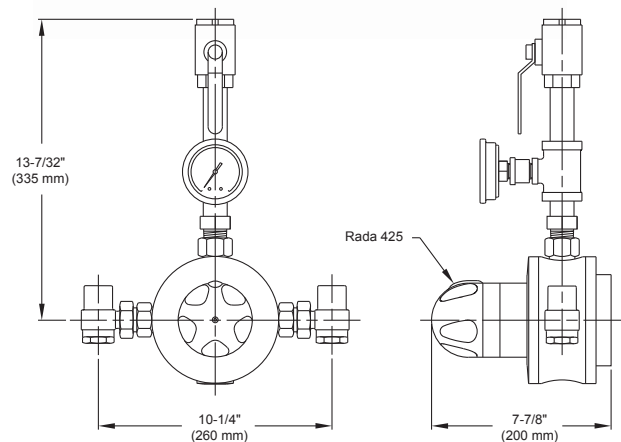
- Dual thermostatic elements provide redundancy in the event of individual thermostat failure
- Typical outlet temperature control +/-2°F
- Adjustable maximum temperature limit stop
- Adjustable single temperature lockout
- Thermal shutdown mode upon inlet supply failure



Technical Specifications

- 1" NPT inlets and 1" NPT outlet
- Chrome plated DZR brass/stainless steel construction with self finish brass and bronze components (425D) or with nickel-plated components (425DC)
- Operating pressures
 - Maximum: 150 psi (10 bar)
 - Minimum: 10 psi (.7 bar)
- Integral combination inlet check stop/union/strainers
- Outlet thermometer and outlet flow control
- ASSE 1017 and CSA B125 certified
- Shipping weight 26 lbs (10 kg)

For a submittal drawing, refer to CDLW #1103.



Rada Thermostatic Mixing Valves (gpm)												
Model	Pressure Drop (psi)										Min. Flow	C _v
	5	10	15	20	25	30	35	40	45	50		
320	8	11	13	15	17	19	20	22	23	24	1	3.4
425	15	22	27	31	35	38	41	44	46	49	2	6.9
40	36	51	62	72	-	-	-	-	-	-	2	16.0
50	49	70	85	98	-	-	-	-	-	-	2	22.0

All dimensions and weights are approximate. Use certified print for exact dimensions. Design and materials are subject to change without notice.



Water Temperature Control - Groups of Fixtures

Thermostatic

Rada 425-FMC

Rada Thermostatic Mixing Valve (TMV) for remote/secure cabinet mount “dead leg” group fixture control. Rada 425 is ideal for this application due to its low service, low inlet to outlet temperature differential requirement and low flow single fixture control capability.

Rada 425-FMC is supplied as standard* fully assembled and pressure tested in an 26" x 30" x 10" stainless steel recessed cabinet with a 2" flange. Cabinet has a polished stainless steel piano-hinged door with a keyed cylinder lock.

Rada 425-FMC is supplied as standard under this model number for top inlet hot and cold water supplies and a top outlet with a left-hand hinged door as indicated in adjacent drawing.

Rada 425-FMC can be specified/ordered with the following piping configurations under the following model numbers:

Top inlets/bottom outlet	425-FMC-TB
Bottom inlets/bottom outlet	425-FMC-BB
Bottom inlets/top outlet	425-FMC-BT

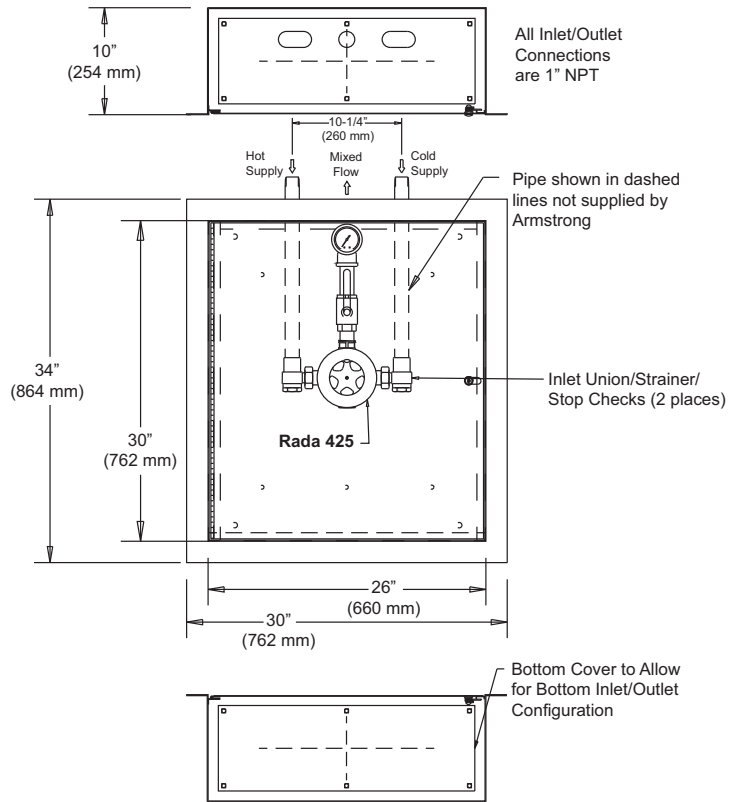
Technical Specifications

- 1" NPT inlets and 1" NPT outlet
- Cabinet construction: 18 gauge #4 finish stainless steel
- Cabinet options:
 - Premium: Stainless steel 14 gauge #4 finish
 - Baked Enamel: White enameled steel 18 gauge
- Cabinet outer flange 2"
- Outlet stop valve
- Integral thermometer
- Integral check stop/strainer/unions
- Refer to Rada 425, page 22, for Mixing Valve operating and technical specifications
- Shipping weight 70 lbs (27 kg)

NOTE: Available as above in a Surface Mounted Cabinet of the same size and specification, less recess flange, under model number 425-SMC.



White enameled steel 18 gauge available upon request.



For a submittal drawing, refer to CDLW #1071.

All dimensions and weights are approximate. Use certified print for exact dimensions. Design and materials are subject to change without notice.