



MODEL NUMBER INDEX

For model numbers/products arranged by product category, see the ID Charts at the beginning of each product section.

Model No.	Page No.	Model No.	Page No.
035	.WHM-85	211	ST-11
038	.WHM-83	211 BVS	LD-35
038AL	.WHM-83	212	ST-11
038SS	.WHM-83	212 BVS	LD-35
038TG	.WHM-83	213	ST-11
038TG-EX	.WHM-84	213 BVS	LD-35
047-79	.WHM-86	214	ST-11
047-81	.WHM-86	215	ST-11
047-81SS	.WHM-86	216	ST-11
047-82	.WHM-86		
047-82SS	.WHM-86		
1-AV	.AV-7	310	ST-21
1-AVC	.AV-5	310-FW	ST-21
1-AVCW	.AV-20	312	ST-21
1-LD	.LD-38	312 BVS	LD-35
1-LDC	.LD-34	312-FW	ST-21
2-AV	.AV-7	313	ST-21
2-DG	.LD-48	313 BVS	LD-35
2-LD	.LD-38	313-FW	ST-21
3-AV	.AV-7	314	ST-21
3-DG	.LD-48	314-FW	ST-21
3-LD	.LD-38	315	ST-21
6-AV	.AV-7	315-FW	ST-21
6-DG	.LD-48	316	ST-21
6-LD	.LD-38	316-FW	ST-21
11-AV	.AV-13		
11-LD	.LD-39	401-SH	ST-27
13-AV	.AV-13	403	WHM-75
13-LD	.LD-39	411G	ST-23
21-LD	.LD-43	411G-FW	ST-23
21-312	.LD-43	413	ST-25
21-AR	.AV-6	413-FW	ST-25
21-312 AR	.AV-6	415 (steam trap)	ST-25
21-312 VAR	.AV-6	415 (water heater)	WHM-6
21-DC	.ST-41	415DW (water heater)	WHM-12
22-AV	.AV-13	415-FW (steam trap)	ST-25
22-DC	.ST-41	416	ST-25
22-LD	.LD-39	416-FW	ST-25
23-DC	.ST-41	421	ST-23
24-DC	.ST-41	421-FW	ST-23
25-DC	.ST-41	442ST	WHM-15
26-DC	.ST-41		
32-AV	.AV-9	501-SH	ST-27
32-DG	.LD-48	535	WHM-6
32-LD	.LD-42	535DW	WHM-12
33-AV	.AV-9	552ST	WHM-15
33-DC	.ST-47	566	WHM-77
33-DG	.LD-48	566T	WHM-77
33-LD	.LD-42		
34-DC	.ST-47	662ST	WHM-15
35-DC	.ST-47	665	WHM-6
36-AV	.AV-9	665DW	WHM-12
36-DC	.ST-47	665 SS	WHM-14
36-DG	.LD-48	665 Parallel	WHM-11
36-LD	.LD-42		
71-315	.LD-43	800	ST-13
71-A	.LD-43	800 BVS	LD-35
81-DC	.ST-43	811	ST-13
82-DC	.ST-43	811 BVS	LD-35
83-DC	.ST-43	812	ST-13
84-DC	.ST-43	812 BVS	LD-35
85-DC	.ST-43	813	ST-13
86-DC	.ST-43	813 BVS	LD-35
		814	ST-15
		815	ST-15
		816	ST-15
180-LD	.LD-40	862ST	WHM-15
181-LD	.LD-40	880	ST-17

Service, Training
and Warranties



Armstrong® MODEL NUMBER INDEX

For model numbers/products arranged by product category, see the ID Charts at the beginning of each product section.

Model No.	Page No.	Model No.	Page No.
880 BVS	LD-35	8120	WHM-6
881	ST-17	8120DW	WHM-12
881 BVS	LD-35	8120 SS	WHM-14
882	ST-17		
882 BVS	LD-35	25133G-HLAR	AV-11
883	ST-17	25133G-HLS	LD-46
883 BVS	LD-35	25155G-HLAR	AV-11
		25155G-HLS	LD-46
981	ST-19	26155G-HLAR	AV-11
981 BVS	LD-36	26155G-HLS	LD-46
983	ST-19		
983 BVS	LD-36	A Series F&T	ST-53
		A1FL 125	S-8
1010	ST-35	A1FL 250	S-8
1011	ST-35	A1SC	S-7
1013	ST-35	A55	WHM-76
1022	ST-35	A8FL 125	S-8
1033 FMCD	WHM-80	ABV-A	WHM-24
1810	ST-37	ABV-G	WHM-24
1811	ST-37	ABV-S	WHM-23
1822	ST-37	ABV-T	WHM-23
		ACV-02	PTC-51
2010	ST-39	ACV-03	PTC-51
2011	ST-39	ACV-04	PTC-51
2022	ST-39	ACV-06	PTC-51
2030	WHM-67	ADP-1	LD-53
2030S	WHM-67	AF-10	PTC-16
2031	WHM-68	AFT-6	CRE-31
2031S	WHM-68	AFT-8	CRE-31
2032	WHM-69	AFT-12	CRE-31
2032S	WHM-69	AFT-16	CRE-31
2033	WHM-70	AI Series F&T	ST-53
2033S	WHM-70	AV-11	R-6/AV-18
2033 FMCD	WHM-80	AV-13	R-6/AV-18
2313-HLS	LD-46		
2313-HLAR	AV-11	B Series F&T	ST-51
2315-HLS	LD-46	B1FL 150	S-10
2315-HLAR	AV-11	B1FL 300	S-10
2316-HLS	LD-46	B1FL 600	S-10
2316-HLAR	AV-11	B1SC	S-9
2413-HLS	LD-46	B1SW	S-9
2413-HLAR	AV-11	BI Series F&T	ST-51
2415-HLS	LD-46		
2415-HLAR	AV-11	C1FL	S-11
2416-HLS	LD-46	C1SC	S-11
2416-HLAR	AV-11	C1SW	S-11
		CA1SC	S-7
3031	WHM-71	CA41SC	S-7
3031S	WHM-71	CC-5	CRE-33
3032	WHM-71	CC-12	CRE-33
3032S	WHM-71	CCA-204	ST-96
3033	WHM-72	CCA-206	ST-96
3033S	WHM-72	CCA-208	ST-96
3033 FMCD	WHM-80	CCA-210	ST-96
3401	WHM-73	CCA-212	ST-96
3403	WHM-74	CCAF-204	ST-96
		CCAF-206	ST-96
4000 Detergent Injection System	WHM-79	CCAF-208	ST-96
		CCAF-210	ST-96
5133G	ST-29	CCAF-212	ST-96
5133G-FW	ST-29	CD-33	ST-75
5155G	ST-29	CD-33L	ST-75
5155G-FW	ST-29	CD-33S	ST-75
		CD-33SL	ST-75
6155G	ST-31	CD-40	ST-79
6155G-FW	ST-31	CD-41	ST-79



MODEL NUMBER INDEX

For model numbers/products arranged by product category, see the ID Charts at the beginning of each product section.

Model No.	Page No.	Model No.	Page No.
CD-42	.ST-79	GD-2000K	PTC-32
CD-43	.ST-79	GP-1	PTC-22
CD-60	.ST-79	GP-1A	PTC-22
CD-61	.ST-79	GP11S	PTC-30
CD-62	.ST-79	GP-18	PTC-22
CD-63	.ST-79	GP-18A	PTC-22
CD-3300	.ST-78	GP-28	PTC-22
CS Series	.ST-59	GP-28A	PTC-22
		GP-1000	PTC-22
D1SW	.S-12	GP-1000A	PTC-22
DPT-104RP	.CRE-15	GP-1000AS	PTC-22
DPT-204RP	.CRE-15	GP-1000SS	PTC-22
DPT-206RP	.CRE-15	GP-2000	PTC-29/PTC-39
DPT-308RP	.CRE-16	GP-2000K-1	PTC-31
DPT-312RP	.CRE-17	GP-2000K-3	PTC-31
DPT-404RP	.CRE-15	GP-2000K-6	PTC-31
DPT-406RP	.CRE-16	GP-2000R	PTC-36
DPT-408RP	.CRE-16		
DPT-412RP	.CRE-17	HBWM	.WHM-81
DPT-3508RP	.CRE-16	J Series Ultra-Capacity F&T Steam Trap	.ST-55
DPT-3512RP	.CRE-17	J Series Ultra-Capacity Drain Trap	.LD-49
		K Series Ultra-Capacity F&T Steam Trap	.ST-55
E7FL 150	.S-14	K Series Ultra-Capacity Drain Trap	.LD-49
E7FL 300	.S-14		
E7FL 600	.S-14	L Series Ultra-Capacity F&T Steam Trap	.ST-57
E7SC	.S-13	L Series Ultra-Capacity Drain Trap	.LD-49
E7SW	.S-13	LS Series Ultra-Capacity F&T Steam Trap	.ST-61
ECV-02	.PTC-51	LS Series Ultra-Capacity Drain Trap	.LD-49
ECV-03	.PTC-51	LV-4	.R-4
EV-4	.R-4	LV-4W	.R-4
F4SC	.S-15	M Series F&T Steam Trap	.ST-57
FIB 003-02	.WHM-82	M Series Drain Trap	.LD-49
FIB 003-25	.WHM-82	MS Series F&T Steam Trap	.ST-61
FIB 003-28	.WHM-82	MS Series Drain Trap	.LD-49
FIB 003-30	.WHM-82	MSD-04	.ST-94
FIB 003-31	.WHM-82	MSD-08	.ST-94
Flexi-Flo 50R-50R	.WHM-47	MSD-12	.ST-94
Flexi-Flo 50R-50R-50R	.WHM-48	MT Series	.ST-83
Flo-Direct® 1500	.WHM-22	MT-2	.ST-83
Flo-Direct® 3000	.WHM-22	MV-3	.R-4
Flo-Direct® 5000	.WHM-22		
Flo-Direct® 7000	.WHM-22	OB-30	PTC-41
FPC-112	.CRE-29	OB-31	PTC-41
FPC-115	.CRE-29	OB-2000	PTC-43
FPC-118	.CRE-29	OB-2000PT	PTC-45
FPC-130	.CRE-29	OBK-2000	PTC-35
FPC-218	.CRE-29		
FPC-230	.CRE-29	PT-104	.CRE-5
FPS-112	.CRE-30	PT-204	.CRE-7
FPS-115	.CRE-30	PT-206	.CRE-7
FPS-118	.CRE-30	PT-308	.CRE-13
FPS-130	.CRE-30	PT-312	.CRE-13
FPS-218	.CRE-30	PT-404	.CRE-9
FPS-230	.CRE-30	PT-406	.CRE-9
		PT-408	.CRE-9
GD-6	.PTC-15	PT-412	.CRE-9
GD-10	.PTC-16	PT-516	.CRE-19/CRE-24
GD-10F	.PTC-16	PT-3508	.CRE-11
GD-6N	.PTC-15	PT-3512	.CRE-11
GD-24	.PTC-18		
GD-30	.PTC-11	Rada 40	.WHM-40
GD-30S	.PTC-11	Rada 40R	.WHM-45
GD-45	.PTC-13	Rada 50	.WHM-41
GD-200	.PTC-19		
GD-200H	.PTC-19		

Service, Training
and Warranties

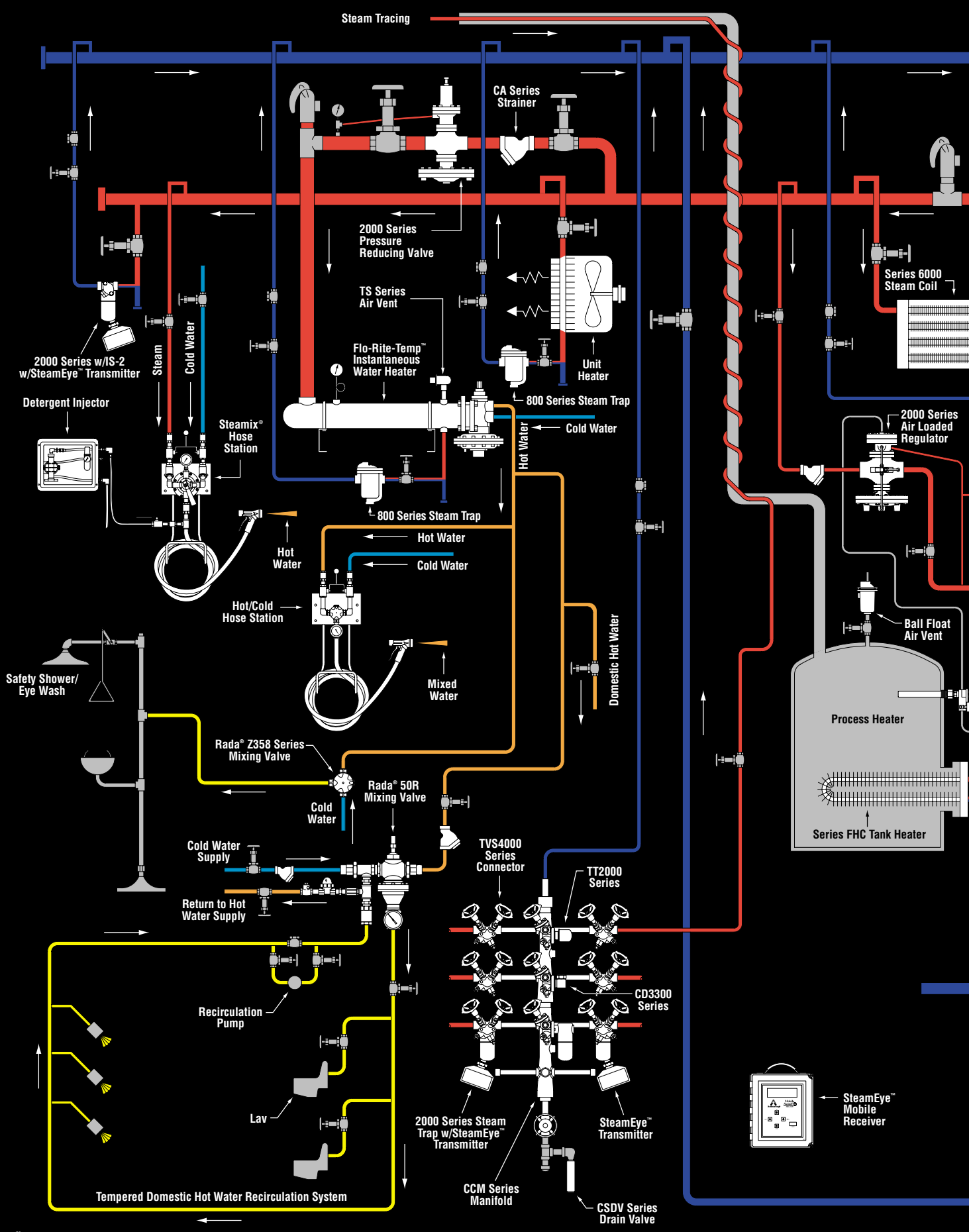


MODEL NUMBER INDEX

For model numbers/products arranged by product category, see the ID Charts at the beginning of each product section.

Model No.	Page No.	Model No.	Page No.
Rada 50R	WHM-46	WMT-1	ST-83
Rada 110	WHM-32	WT-1	ST-81
Rada 215	WHM-33	WT-3	ST-81
Rada 320	WHM-34	WT-2000	ST-81
Rada 320D	WHM-35	WV-4	R-4
Rada 320-FMC	WHM-36	Air Loaders	PTC-34
Rada 320R	WHM-43	Armstrong Steam University	SER-6
Rada 425	WHM-37	Clean-In-Place Scale Removal System	WHM-18
Rada 425D	WHM-38	Coil-A-ware™	C-22
Rada 425-FMC	WHM-39	Control Panels	PTC-34
Rada 425R	WHM-44	Detergent Injection System	WHM-79
Rada Z358	WHM-53	Duramix™ Heating Coil	C-47
Rada Z358-20	WHM-55	Electronic Mixing Centers	WHM-49
Rada Z358-20-FMC	WHM-57	Flexi-Flo™ Packages	WHM-47
Rada Z358-40	WHM-58	Flo-Direct®	WHM-20
Rada Z358-40-FMC	WHM-60	Flow Indicator	WHM-82
RV-4	R-3/R-5/AV-19	Heavy Duty Coils	C-1
SH-250	ST-84	Hose Station Cabinet Assembly	WHM-80
SH-900	ST-84	Liquid Coils	C-16
SMSD-04	ST-94	Non-Electric Steam/Air Powered Pump	CRE-27
SMSD-08	ST-94	Stainless Steel Sump Ejector	CRE-34
SMSD-12	ST-94	Plate Fin Coils	C-21
SPT-104RP	CRE-15	Posi-Pressure Control System	C-60
SPT-204RP	CRE-15	Rada Mixing Valves	WHM-32
SPT-206RP	CRE-15	Radiator Valve In-Service Repair Tool	R-4
SPT-308RP	CRE-16	Steam Trap Options and Connectors	ST-99
SPT-312RP	CRE-17	SteamEye®	TM-1
SPT-404RP	CRE-15	SteamEye Mobile Receiver	TM-5
SPT-406RP	CRE-16	SteamEye Software	TM-4
SPT-408RP	CRE-16	SteamEye Transmitter	TM-3
SPT-412RP	CRE-17	Steamix®	WHM-63
SPT-3508RP	CRE-16	Steamix® VE	WHM-65
SPT-3512RP	CRE-17	T-Wafer Capsule	R-8
SV-12	R-5/AV-19	Tank Heaters	C-51
TAVB	ST-87	TrapAlert™	TM-9
TC Series	ST-89	Steam-A-ware™	CG-15/ SER-3, SER-12
TS-2	ST-88/R-7/ AV-17	Unit Heaters	C-27
TS-3	ST-88/R-7	Y Strainers	S-1
TS202	WHM-78		
TT-2000	ST-85		
TTF-1	ST-85/AV-15		
TTF-1R	ST-85/AV-15		
TV-2	AV-16		
TVS 81-DC	ST-45		
TVS 82-DC	ST-45		
TVS 83-DC	ST-45		
TVS 811	ST-63		
TVS 812	ST-63		
TVS 813	ST-63		
TVS 2000	ST-71		
TVS 2010	ST-73		
TVS 2010 IS-2	ST-73		
TVS 2011	ST-73		
TVS 2011 IS-2	ST-73		
TVS 2022	ST-73		
TVS 2022 IS-2	ST-73		
TVS 4000	ST-67		
U-1010	ST-35		
U-1011	ST-35		
U-1022	ST-35		

Service, Training
and Warranties



Armstrong International, Inc.

816 Maple Street, P.O. Box 408, Three Rivers, Michigan 49093 – USA Phone: (269) 273-1415 Fax: (269) 278-6555

Parc Industriel Des Hauts-Sarts, B-4040 Herstal/Liege, Belgium Phone: (32) (42) 409090 Fax: (32) (42) 481361