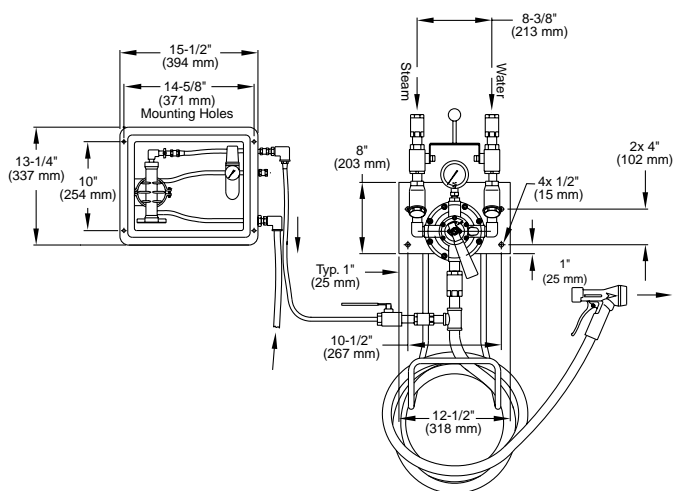




Armstrong® Detergent Injection System—Series 4000



Water Heating and Mixing

The Armstrong Series 4000 Detergent Injection System is designed specifically to introduce detergent or a sanitizing liquid into the flowing line for washdown purposes.

The Armstrong Series 4000 pumped system is designed to maximize the available washdown water pressure and volume to achieve maximum plant hygiene in the shortest possible time.

Because the Armstrong Series 4000 pump is driven by compressed air, no electrical hook-ups are required in your washdown areas.

The Armstrong Series 4000 Detergent Injection System incorporates an all polymer construction pneumatic pump with a Teflon internal operating diaphragm and 1/4" (6 mm) connections. Each unit comes supplied with an in-line air filter, pressure gauge, air and chemical flow regulating needle valves, all preassembled, piped and pressure tested. The pump assembly is first mounted on a stainless steel 11-1/2" x 13-1/2" (292 x 343 mm) wall plate with a 5-1/4" (133 mm) shelf, then secured within a NEMA 4X rated fiberglass enclosure with stainless steel latches and padlock hasps. The 12" x 14" x 8" (304 x 355 x 203 mm) enclosure features a shatterproof 10" x 12" (254 x 304 mm) Lexan "view" window. The complete assembly includes 1/4" (6 mm) air inlet and chemical inlet and 1/4" (6 mm) outlet fittings, a detergent supply hose with strainer, an outlet ball valve for flow control and two check valves to eliminate cross connection potential (an in-line vacuum breaker is also available for installation where local code stipulates).

The Armstrong Series 4000 is recommended for use with existing washdown stations or as an accessory item to Armstrong Models 1033-25/50, 2033-25/50 and 3033-25/50.

The durable, low-maintenance PVDF and Teflon pump unit is designed for liquid chemical flows to 1.5 gpm (5.7 lpm) and is suitable for inlet air pressure supplies up to 125 psi (8.6 bar). The pump unit is designed to shut itself off in a no-flow condition and then reactivate upon flow demand, thereby giving "remote" operation at the end of the primary washdown hose by using a self-closing trigger spray nozzle.

Supplied fully assembled and pressure tested with the following standard components:

- 1/4" (6 mm) NPT air line connection
- 1/4" (6 mm) PVDF/Teflon pneumatic pump
- 1 needle valve
- Detergent supply hose with intake filter/foot strainer
- 2 check valves and outlet ball valve
- Air filter with pressure gauge
- Housed in durable fiberglass enclosure with Lexan window

Technical Specifications

- Pump flow capacities up to 1.5 gpm (5.7 lpm)
- Chemical mix ratios up to 100:1
- Maximum operating air pressure 125 psi (8.6 bar)
- Shipping weight 27 lbs (12 kg)

For a fully detailed certified drawing, refer to CDLW #1007.

For a fully detailed certified drawing as shown above with STEAMIX 2033, refer to CDLW #1006.

All dimensions and weights are approximate. Use certified print for exact dimensions. Design and materials are subject to change without notice.