



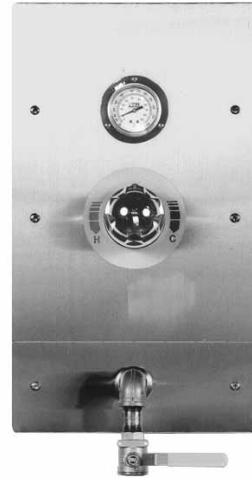
Armstrong® Hot & Cold Water Hose Stations and Mixing Units

Model 3401

Model 3401 features a Model 320 3/4" (20 mm) thermostatic mixing valve (TMV) of disposable cartridge construction. TMV features unique full-range temperature control from full cold to field-adjustable maximum temperature limit stop in a single handle turn. TMV can be set and locked to a single temperature and will hold outlet temperatures +/-2°F (1°C) in the event of inlet pressure and/or temperature fluctuation/change. Thermal shutdown capability protects operator in the event of an inlet supply failure.

Model 3401 is designed for wall-recessed installation and includes combination inlet isolation/strainer/check valves and stainless steel panel-mount thermometer. TMV, pipe work and associated components are secured within a rugged steel mounting frame and concealed behind a 13.25" x 23.25" polished stainless steel "easy service access" cover panel.

Model 3401 includes an exposed polished chrome temperature-control-handle and stainless steel flow-control ball valve. Ideal for clean rooms, pharmaceutical mixing rooms, research labs or similar locations where temperature-controlled hot water is required, but where surface-mount piping and fixtures are undesirable.

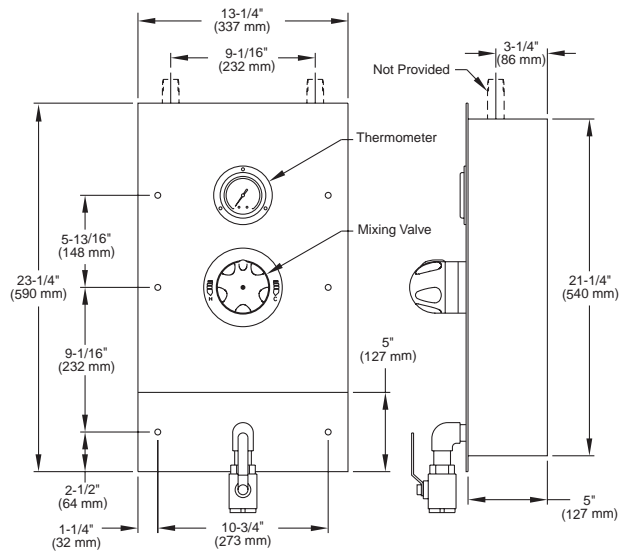


Technical Specifications

- 3/4" (20 mm) inlet/outlet
- Operating pressures
 - Maximum: 150 psi (10 bar)
 - Minimum: 10 psi (.7 bar)
- Max pressure loss ratio: 10 to 1*
- Integral check valves
- Integral strainers
- Integral unions
- Panel-mount thermometer
- Maximum temperature stop
- Single temperature lock
- +/-2°F (1°C) control
- Full range temperature control**

* Ratio of inlet pressures accounting for restrictions on valve outlet (minus back pressure).

****IMPORTANT NOTE: Other thermostatic products used for this application cannot provide full cold to field adjustable maximum limit stop temperature range or access temperatures within 5°F (2°C) of either inlet supply temperature.**



For a fully detailed certified drawing, refer to CDLW #1069.